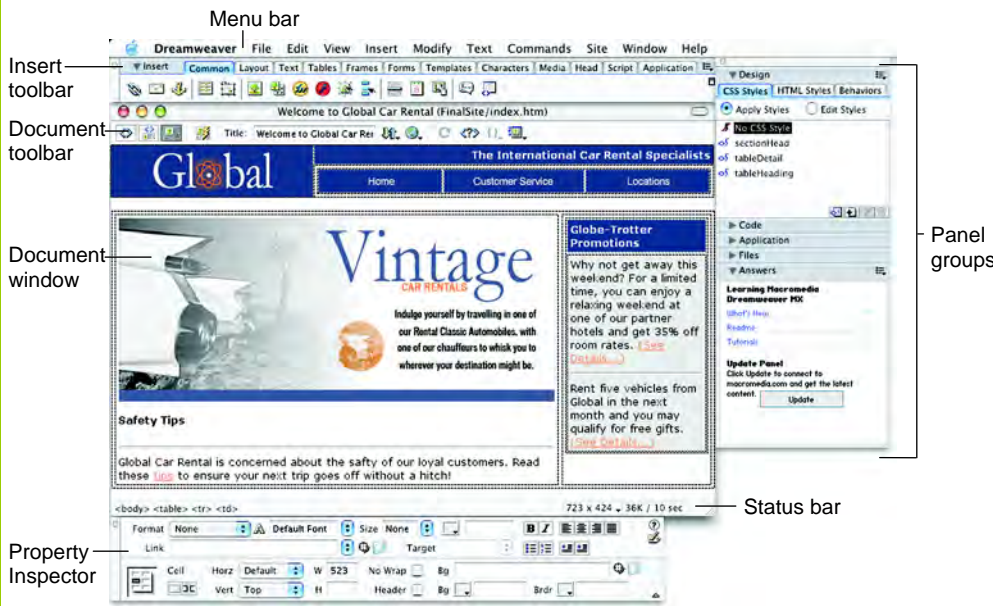




### Dreamweaver MX Workspace in OS X



### Keyboard Shortcuts

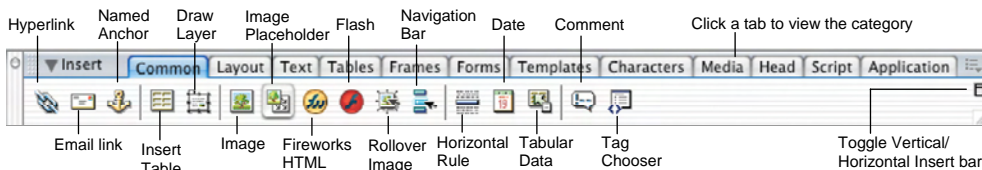
#### General

Insert Named Anchor	<b>&lt;⌘&gt; + &lt;Option&gt; + &lt;A&gt;</b>
Add to Library	<b>&lt;⌘&gt; + &lt;Shift&gt; + &lt;B&gt;</b>
Select All	<b>&lt;⌘&gt; + &lt;A&gt;</b>
Preferences	<b>&lt;⌘&gt; + &lt;U&gt;</b>
Replace	<b>&lt;⌘&gt; + &lt;H&gt;</b>
Show/Hide Grids	<b>&lt;⌘&gt; + &lt;Option&gt; + &lt;G&gt;</b>
Visual Aids	<b>&lt;⌘&gt; + &lt;Shift&gt; + &lt;I&gt;</b>
Insert Image	<b>&lt;⌘&gt; + &lt;Option&gt; + &lt;I&gt;</b>
Page Properties	<b>&lt;⌘&gt; + &lt;J&gt;</b>
Create Link	<b>&lt;⌘&gt; + &lt;L&gt;</b>
Remove Link	<b>&lt;⌘&gt; + &lt;Shift&gt; + &lt;L&gt;</b>
Insert Table Row	<b>&lt;⌘&gt; + &lt;M&gt;</b>
Delete Table Row	<b>&lt;⌘&gt; + &lt;Shift&gt; + &lt;M&gt;</b>
Quick Tag Editor	<b>&lt;⌘&gt; + &lt;T&gt;</b>
View Head Content	<b>&lt;⌘&gt; + &lt;Shift&gt; + &lt;W&gt;</b>
Show/Hide Link	<b>&lt;⌘&gt; + &lt;Shift&gt; + &lt;Y&gt;</b>
Switch Views	<b>&lt;⌘&gt; + &lt;`&gt;</b>

### Document Toolbar

- Code View:** View or edit the page in HTML.
- Split View:** View the page in HTML code and Design view (WYSIWYG) at the same time.
- Design View:** View or edit the page in the WYSIWYG (What You See Is What You Get) editor.
- Live Data View:** View dynamic data
- Title:** Type the Web page title without using the Page Properties dialog box. The title appears in the title bar of the browser.
- File Management:** Have easy access to files already published, or upload files directly from the document window.
- Preview:** Choose from a list of browsers installed on the computer to preview the page.
- Refresh:** Click to update changes made to the page while working on the HTML code.
- Reference:** Click to view the definition of the current tag in the Reference panel.
- Code Navigation:** Click to view the definition of the current tag in the Reference panel.
- View Options:** In Design view, turn visual aids off or on such as table borders, or apply a grid or ruler to the page. In Code view or the Code Inspector, change how the HTML code is displayed.

### Insert Panel



- Common:** includes objects commonly inserted in a Web page (ex. tables, images, layers)
- Layout:** insert or draw layout tables and cells on the page
- Text:** apply formatting to text (ex. bold, italic, list item)
- Tables:** insert table and set table properties
- Frames:** insert layouts often used for frame pages
- Forms:** insert elements often found in a Web form (i.e. text fields, option buttons, check boxes)
- Templates:** create and edit a template
- Characters:** insert special text symbols and line commands (ex. Copyright, Euro, line break)
- Media:** insert dynamic elements (ex. Flash, Shockwave)
- Head:** insert tags in the head section of the Web page (ex. meta, keywords, page description)
- Script:** insert script
- Application:** Recordset, dynamic table, Record form

### Function Key Shortcuts

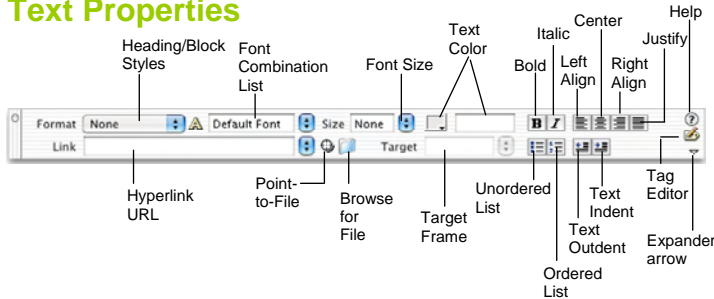
Reference	<b>&lt;Shift&gt; + &lt;F1&gt;</b>
Layers	<b>&lt;F2&gt;</b>
Insert bar	<b>&lt;⌘&gt; + &lt;F2&gt;</b>
Frames	<b>&lt;Shift&gt; + &lt;F2&gt;</b>
Property Inspector	<b>&lt;⌘&gt; + &lt;F3&gt;</b>
Behaviors Panel	<b>&lt;Shift&gt; + &lt;F3&gt;</b>
Hide/Show Panels	<b>&lt;F4&gt;</b>
Refresh	<b>&lt;F5&gt;</b>
Refresh Local	<b>&lt;Shift&gt; + &lt;F5&gt;</b>
Switch to Layout View	<b>&lt;⌘&gt; + &lt;F6&gt;</b>
Switch to Standard View	<b>&lt;⌘&gt; + &lt;Shift&gt; + &lt;F6&gt;</b>
Site Files	<b>&lt;F8&gt;</b>
Check site links	<b>&lt;⌘&gt; + &lt;F8&gt;</b>
Code Inspector	<b>&lt;F10&gt;</b>
History Panel	<b>&lt;Shift&gt; + &lt;F10&gt;</b>
Assets Panel	<b>&lt;F11&gt;</b>
CSS Styles Panel	<b>&lt;Shift&gt; + &lt;F11&gt;</b>
Preview in Primary Browser	<b>&lt;F12&gt;</b>
Preview in Secondary Browser	<b>&lt;Shift&gt; + &lt;F12&gt;</b>

## Property Inspector

### General Commands

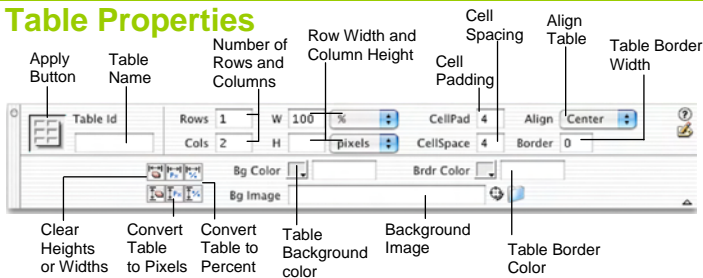
- Select an item to view its properties.
- **To Get Help:** Click the **Help button** for more information on options.
- **Format Text in HTML Code:** Click the **Quick Tag Editor button** to apply an HTML tag to selected text or object.
- **To Expand/Contract the Property Inspector:** Click the **Expander arrow** in the lower right corner to view or hide all the options in the Property Inspector.

### Text Properties



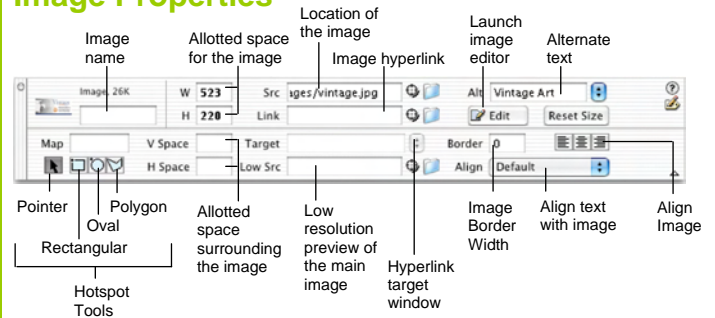
- **To Format Text:** Select the text and apply formatting from the Property Inspector.
- **To Create a Hyperlink:** Select the text and type the URL in the Link textbox; or drag the **Point-to-File icon** to the file in the Site window; or click the **Folder icon** to browse for a file in the Web site.
- **Specify Link Target Frame:** Specify in which frame the hyperlink should appear.

### Table Properties



- **To View Table Formatting:** Click the **Apply button** in the Inspector.
- **To Add or Delete Rows or Columns:** Type the number of rows or columns you want to add or delete in the Rows and Cols text boxes.
- **To Change Table Width or Height:** Type a number in the W or H text boxes.
- **To Display the Table in Pixels or Percent:** Click the **pixels or percent list arrow** for the Rows and Columns and select the display option.
- **To Add Cell Padding or Cell Spacing:** Enter the amount in the CellPad or CellSpace text boxes.
- **To Add a Table Border:** Enter the amount in the Border text box.
- **To Add a Background Color:** Click the **Bg Color list arrow** and select a color from the palette.
- **To Add a Border Color:** Click the **Brdr Color list arrow** and select a color from the palette.
- **To Add a Background Image:** Type the location in the Bg text box, or drag the **Point-to-File icon** to the file in the Site window; or click the **Folder icon** to browse for a file.
- **To Add a Table Border:** Enter the width in the Border text box.

## Image Properties



- **To Add a Hyperlink to an Image:** Select the text and type the URL in the Link textbox; or drag the **Point-to-File icon** to the file in the Site window; or click the **Folder icon** to browse for a file in the Web site.
- **To Create an Image Map:** Select the **Rectangular, Oval, or Polygon Hotspot Tool**, draw a shape and set the link location.
- **To Edit an Image:** Click the **Edit button** to launch the default graphic editor program on your computer.
- **To Align an Image:** Click the **Align list arrow** and align the image relative to text nearby; or click the **Left, Center or Right Align button** in the Inspector.
- **To Insert an Image:** Press **<Ctrl> + <Alt> + <I>**, or select **Insert → Image** from the menu.

## Panels

- **To View or Hide a Panel:** Select **Window** from the menu bar and select the panel you want to view or hide. Or, click the panel group and select the panel tab you want to view.
- **To View or Hide Panel Groups:** Click the **Panel group Expander arrow** between the document window and the panel groups.
- There are six panel groups, and a total of 19 different panels available in Dreamweaver:

### Design

**CSS Styles:** Apply CSS styles to the current selection

**HTML Styles:** Apply HTML styles based on other HTML tags to the selection

**Behaviors:** Attach and modify behaviors to specific page elements, specifically HTML tags

### Code

**Code Inspector:** Work on the page in HTML code; just like Code view but in a separate window

**Snippets:** Create, delete, edit, or insert code snippets in the document

**Reference:** View detailed information about the HTML tag you're working on

### Application

**Databases:** Create and inspect database connections, insert database code

**Bindings:** Locate and insert dynamic content

**Server Behaviors:** Create, insert and edit server behaviors into the page

**Components:** Create, inspect, and insert components or component code

### Files

**Site:** Track local and remote files, and upload files on the Web

**Assets:** View and insert site assets such as images, HTML colors, links, Flash movies, scripts, templates, and library items

**Answers:** Get answers to questions about Dreamweaver MX

### Others

**Code Inspector:** Work on the page in HTML code; just like Code view but in a separate window

**Frames:** View a representation of the frames that make up the page

**History:** Replay or Undo steps already performed in Dreamweaver

**Layers:** Manage the layers in the page

**Sitespring:** Web development collaboration feature

**Timeline:** View the properties change in layers and images over time